

Software Einstellungen für Yaesu FT 991A



Hier werden die Einstellungen der Amateurfunk - Programme WSJT-X, MMSSTV und MixW4 gezeigt, die ich für den Yaesu FT 991A zum Betrieb vorgenommen habe und diese auch so ohne Probleme bei mir funktionieren.

Schritt 1: General Einstellung

The screenshot shows the 'Settings' dialog box for WSJT-X, with the 'General' tab selected. The window title is 'Settings' and it has standard Windows window controls (minimize, maximize, close). The 'General' tab is active, and other tabs include 'Radio', 'Audio', 'Tx Macros', 'Reporting', 'Frequencies', 'Colors', and 'Advanced'.

Station Details

My Call: My Grid: AutoGrid IARU Region:
Message generation for type 2 compound callsign holders:

Display

Start new period decodes at top
 Blank line between decoding periods
 Display distance in miles
 Tx messages to Rx frequency window
 Show DXCC, grid, and worked-before status Show principal prefix instead of country name

Behavior

Monitor off at startup Enable VHF and submode features
 Monitor returns to last used frequency Allow Tx frequency changes while transmitting
 Double-click on call sets Tx enable Single decode
 Disable Tx after sending 73 Decode after EME delay
 Calling CQ forces Call 1st
 Alternate F1-F6 bindings Tx watchdog:
 CW ID after 73 Periodic CW ID Interval:

Schritt 2: Einstellungen TRX / Radio

The screenshot shows the 'Settings' dialog box with the 'Radio' tab selected. The 'Rig' is set to 'Yaesu FT-991' and the 'Poll Interval' is '1 s'. The 'CAT Control' section is expanded, showing the following settings:

- Serial Port: COM7
- Serial Port Parameters: Baud Rate: 38400
- Data Bits: Default Seven Eight
- Stop Bits: Default One Two
- Handshake: Default None XON/XOFF Hardware
- Force Control Lines: DTR: [dropdown] RTS: [dropdown]

The 'PTT Method' section shows:

- VOX DTR
- CAT RTS
- Port: COM1

The 'Transmit Audio Source' section shows:

- Rear/Data Front/Mic

The 'Mode' section shows:

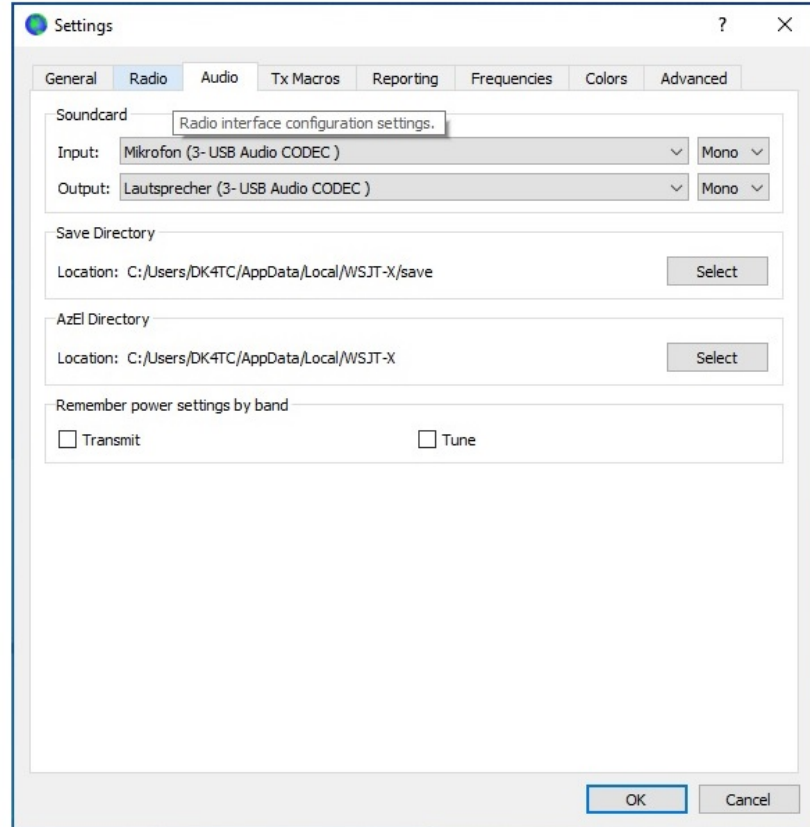
- None USB Data/Pkt

The 'Split Operation' section shows:

- None Rig Fake It

Buttons for 'Test CAT' and 'Test PTT' are located below the PTT Method section. At the bottom of the dialog are 'OK' and 'Cancel' buttons.

Schritt 3: Audio / Soundkarte wählen



Schritt 4: Einstellungen für den Wasserfall. Diese Einstellungen individuell anpassen.

